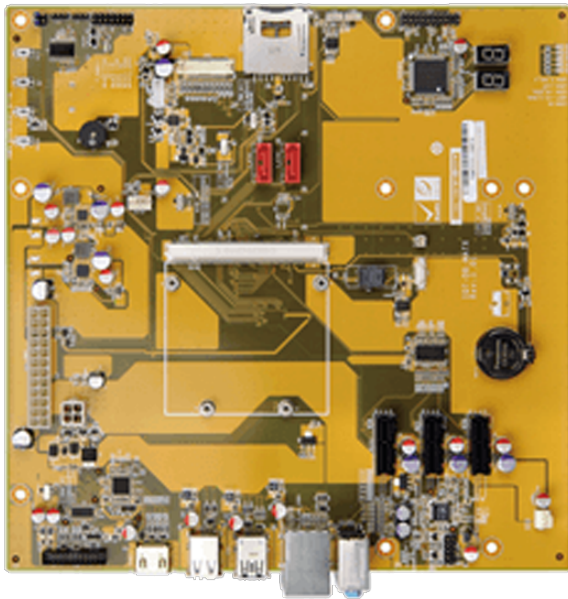


# iQ7-DB-MATX

Baseboard for Qseven Rev. 2.0 Module



## Features

- » mATX form factor baseboard for Qseven Rev. 2.0 module
- » Supports three PCIe x1
- » 18/24-bit dual-channel LVDS
- » Supports iRIS-2400/iRIS-2100

## Specifications

Physical Characteristics	
Dimensions (LxWxH) (mm)	243.8 X 243.8
Storage	
Storage	2 x SATA 1 x SD/MicroSD card
I/O Interface	
Display Output	1 x HDMI 1 x LVDS 1 x iDP
Ethernet	1 x LAN :RJ45
Audio	Description: Realtek ALC662 HD Audio codec 1 x Line in 1 x Line out 1 x Mic
I/O Interface	5 x External USB 2.0 1 x External USB 3.2 Gen1x1
Expansion	3 x PCIe x1
Other Features	
TPM	2x10 pin
Power	
Power Supply	Support AT/ATX mode
Environment	
Operating Temperature	-40°C ~ 85°C
Humidity	5% ~ 95%, non-condensing
Certifications	
Safety & EMC	CE/FCC compliant

## Ordering Information

---

iQ7-DB-MATX-R10	Base Board for Qseven® Rev. 2.0 module
-----------------	--